

Population health snapshot

DEMOGRAPHICS



0–14 years
3,417

15–64 years
9,984

65 years +
2,553

65 years +
16.0%

188 people identify as Aboriginal and Torres Strait Islander

FACTORS WHICH IMPACT ON HEALTH



93.6%

dwellings with at least one
motor vehicle



70.2%

dwellings with internet
connection



1.8%

unemployment rate



12.2%

dwellings have an income
less than \$400 per week

ACCESS TO SERVICES



104.6

General Practitioners
(SA3 Warrnambool-Otway Ranges)



4

General Practices



1

Public Hospitals*



0

Private Hospitals

0 Bush Nursing Hospitals | 0 Independent Community Health Services | 0 Bush Nursing Centres
1 Aboriginal Community-Controlled Health Organisation (ACCHO)

*Public hospitals are counted as the number of hospital locations with acute beds
SA3: Statistical Area 3 (Western Victoria PHN is divided into nine SA3s)

HOSPITALISATIONS

37

Potentially preventable
hospitalisations per 1,000
people (age standardised)

24

Potentially preventable
hospitalisations for chronic
conditions per 1,000 people
(age standardised)

323

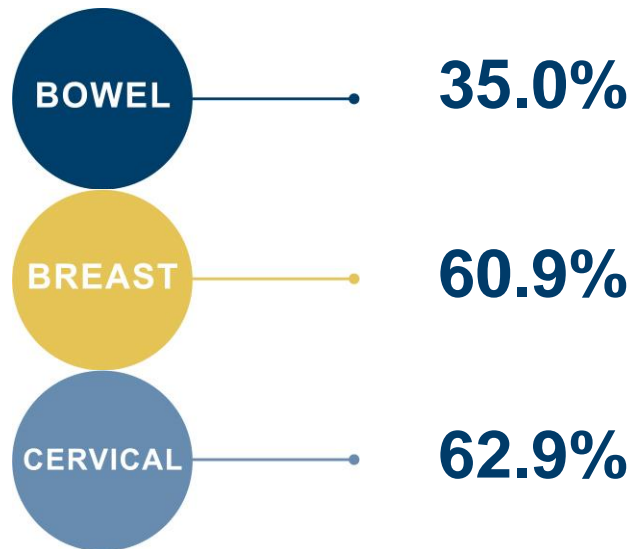
Emergency department
presentations
per 1,000 people

335

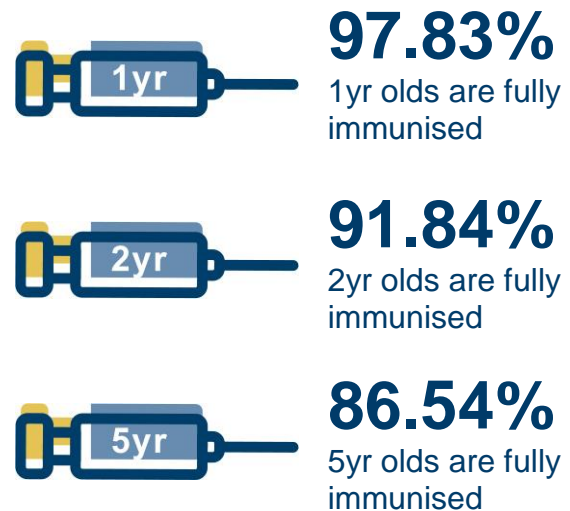
Hospital admissions
per 1,000 people

Population health snapshot

CANCER SCREENING RATES



IMMUNISATIONS



HEALTH RISK FACTORS 18 YEARS AND OVER



16.7%
current smokers



12.1%*
complying with fruit and vegetable consumption guidelines



72.4%
met 1999 National physical activity guidelines for adults



34.3%
are overweight



18.7%
are obese

*Estimate has a relative standard error of between 25 and 50 per cent and should be interpreted with caution

MENTAL HEALTH



10.8

18yrs and over with high or very high psychological distress per 100 people (age standardised)



15.6

percent of people with a lifetime prevalence of depression and anxiety



11.3

deaths from suicide and self-inflicted injuries per 100,000 people (age standardised)

CHRONIC DISEASE



3.8%

of persons 18 years and over with type 2 diabetes



16.5%

circulatory system disease (age standardised)

SOURCES

ABS Census, 2011 | Aust. Government Department of Employment, 2015 | AIHW, 2014 | Service Mapping from multiple sources e.g. Department of Health, National Health Services Directory, & VACCHO | Compiled by PHIDU based on modelled estimates from 2011-13 Australian Health Survey, ABS (unpublished); & the average of ABS Estimated Resident Population, 30 June 2011 & 30 June 2012, based on Aust. standard | Compiled by PHIDU from deaths data based on 2009-13 Cause of Death Unit Record Files supplied by Aust. Coordinating Registry and Victorian Department of Justice, on behalf of Registries of Births, Deaths & Marriages & National Coroner Information System. The population at the small area level (Statistical Area Level 2) is ABS Estimated Resident Population (ERP), 30 June 2009 to 30 June 2013; population standard is ABS ERP for Aust., 30 June 2009 to 30 June 2013 | Compiled by PHIDU based on data from: 1) BreastScreen NSW, BreastScreen Vic, BreastScreen Qld, BreastScreen SA, BreastScreen WA 2010 & 2011; & BreastScreen ACT 2007 & 2008; & 2) average of ABS ERP, 30 June 2010 & 30 June 2011 (NSW, Vic, Qld, SA & WA); 30 June 2007 & 30 June 2008 (ACT) | Victorian Cervical Cytology Registry Statistical Report, 2014 | Aust. Government Department of Health. ACIR. Jan-March 2016 | Victorian Population Health Survey, 2011-12 | Victorian Population Health Survey, 2011-12. Analysis based on 2003 fruit & vegetable consumption guidelines which have since changed | Victorian Health Information Surveillance System Ambulatory Care Sensitive Conditions reports, 2013-14. Data unavailable for Horsham | Polar Explorer - Victorian Admitted Episodes Dataset, 2014/15