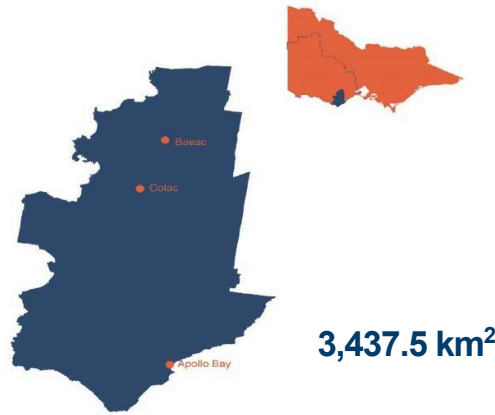


# Colac-Otway Shire

## Population Health Snapshot 2018



**phn**  
WESTERN VICTORIA  
An Australian Government Initiative

### DEMOGRAPHICS



**20,972**  
people living in this area



0–14 years

**17.6%**  
3,694

15–64 years

**60.6%**  
12,713

65 years +

**21.7%**  
4,554

Persons identify as Aboriginal and/or Torres Strait Islander

**1.2%**  
254

### FACTORS WHICH IMPACT ON HEALTH



**94.5%**

dwelling with at least one motor vehicle



**76.2%**

dwelling with internet connection



**3.5%**

unemployment rate



**27.7%**

dwelling has an income less than \$650 per week

### ACCESS TO SERVICES



**27.9**

General Practitioners  
Full time equivalent



**7**

General Practices



**2**

Public Hospitals\*



**0**

Private Hospitals

\*Public hospitals are counted as the number of hospital locations with acute beds



### HOSPITALISATIONS

**25.3**

Ambulatory Care Sensitive Conditions  
age standardised per 1,000 people

**10.89**

Chronic Ambulatory Care Sensitive  
Conditions age standardised per 1,000  
people

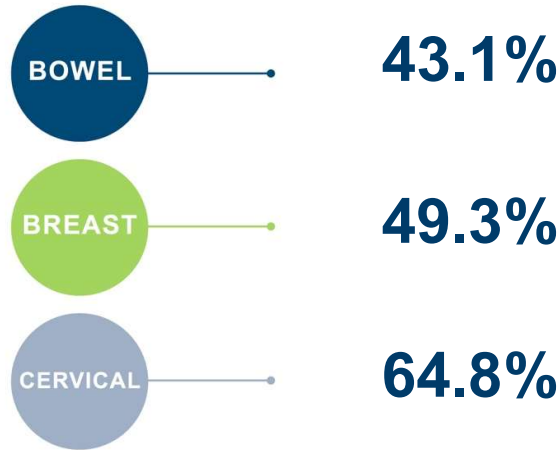
**12.2**

Primary care emergency department  
presentations per 1,000 people

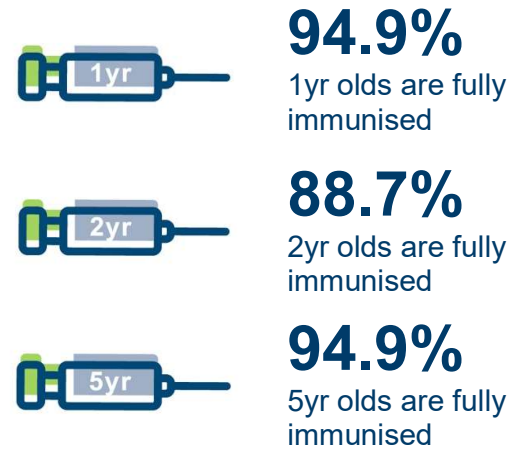
# Colac-Otway Shire

## Population Health Snapshot 2018

### CANCER SCREENING RATE



### IMMUNISATIONS



### HEALTH RISK FACTORS (18 years and over)



**13.6%**  
current smokers



**6.8%**  
complying with fruit and vegetable consumption guidelines



**40.3%**  
met physical activity guidelines for adults



**35.3%**  
are overweight



**19.9%**  
are obese

### MENTAL HEALTH



**6.9%** persons 18 years and over with high or very high psychological distress (age standardised)



**21.9%** persons 18 years and over with a lifetime prevalence of anxiety and depression (age standardised)



**16.1** deaths from suicide and self-inflicted injuries per 100,000 persons

### CHRONIC DISEASE



**4.5%**  
with type 2 diabetes



**16.6%**  
of persons 2 years and over with circulatory system disease (age standardised)

### SOURCES

Australian Bureau of Statistics 2017, 2016 Census of Population and Housing, General Community Profile, Australian Bureau of Statistics, retrieved 10 February 2018, <www.censusdata.abs.gov.au> | Australian Institute of Health and Welfare 2018, Mortality Over Regions and Time (MORT) books, Local Government Area (LGA), 2012-2016, Australian Institute of Health and Welfare, Australian Government, retrieved 6 September 2018, <www.aihw.gov.au> | Australian Institute of Health and Welfare 2018, National Health Workforce Data Set 2013-16, Australian Institute of Health and Welfare, Australian Government, retrieved 18 November 2018, <http://hwd.health.gov.au> | Australian Institute of Health and Welfare, Participation in the National Bowel Cancer Screening Program, persons 2014/15, Department of Health, Australian Government, retrieved from PHIDU 2018, Social Health Atlas of Australia, Victoria, Data by Local Government Area, PHIDU, Torrens University Australia, retrieved 14 March 2018, <www.phidu.torrens.edu.au> | Department of Health and Human Services 2017a, 2015 Local Government Area (LGA) Statistical Profiles, Department of Health and Human Services, State Government of Victoria, retrieved 17 May 2018, <www2.health.vic.gov.au> | Department of Health and Human Services 2017b, Victorian Population Health Survey 2014, Department of Health and Human Services, State Government of Victoria, retrieved 14 February 2018, <www2.health.vic.gov.au> | Department of Health and Human Services 2018, Private hospital and day procedure centres, Department of Health and Human Services, State Government of Victoria, retrieved 23 February 2018, <www2.health.vic.gov.au> | Department of Health and Human Services c.2018a, Community Health Directory, Department of Health, State Government of Victoria, retrieved 28 February 2018, <www2.health.vic.gov.au> | Department of Health and Human Services c.2018b, Rural regions and locations, Department of Health and Human Services, State Government of Victoria, retrieved 23 February 2018, <www2.health.vic.gov.au> | Department of Jobs and Small Business 2018, LGA Data tables — Small Area Labour Markets — December quarter 2017, Department of Jobs and Small Business, Australian Government, retrieved 11 April 2018, <docs.jobs.gov.au> | Department of Veterans' Affairs c. 2018, Rural public hospitals-Victoria, Department of Veterans' Affairs, Australian Government, retrieved 23 February 2018, <www.dva.gov.au> | Health Direct Australia 2018, National Health Services Directory, Department of Health, Australian Government, retrieved 02 March 2018 <about.healthdirect.gov.au> | National Diabetes Services Scheme 2018, Diabetes Map (derived from National Diabetes Services Scheme Registrant database and the Australian Bureau of Statistics population projections 2012-2101), Diabetes Australia, Australian Government, retrieved 6 September 2018, <www.ndss.com.au> | PHIDU 2018, Social Health Atlas of Australia, Victoria, Data by Local Government Area, PHIDU, Torrens University Australia, retrieved 14 March 2018, <www.phidu.torrens.edu.au> | Victorian Aboriginal Community Controlled Health Organisation Inc 2018, Our Members, Victorian Aboriginal Community Controlled Health Organisation Inc, retrieved 28 February 2018, <www.vaccho.org.au> | Victorian Health Information Surveillance System 2017, All Individual Ambulatory Care Sensitive Conditions, Department of Health and Human Services, retrieved 11 January 2018, <hns.dhs.vic.gov.au>