

# Glenelg Shire

## Population Health Snapshot 2018



**phn**  
WESTERN VICTORIA  
An Australian Government Initiative

### DEMOGRAPHICS



**19,557**  
people living in this area



0–14 years

**16.2%**

3,175

15–64 years

**61.6%**

12,048

65 years +

**22.2%**

4,339

Persons identify as Aboriginal and/or Torres Strait Islander

**2.4%**

476

### FACTORS WHICH IMPACT ON HEALTH



**95.1%**

dwellings with at least one motor vehicle



**76.4%**

dwellings with internet connection



**4.7%**

unemployment rate



**28.6%**

dwellings have an income less than \$650 per week

### ACCESS TO SERVICES



**21.8**

General Practitioners  
Full time equivalent



**10**

General Practices



**3**

Public Hospitals\*



**0**

Private Hospitals

**Other Services:** 1 Bush Nursing Centre | 2 Aboriginal Community-Controlled Health Organisations (ACCHOs)

\*Public hospitals are counted as the number of hospital locations with acute beds



### HOSPITALISATIONS

**23.54**

Ambulatory Care Sensitive Conditions age standardised per 1,000 people

**13.7**

Chronic Ambulatory Care Sensitive Conditions age standardised per 1,000 people

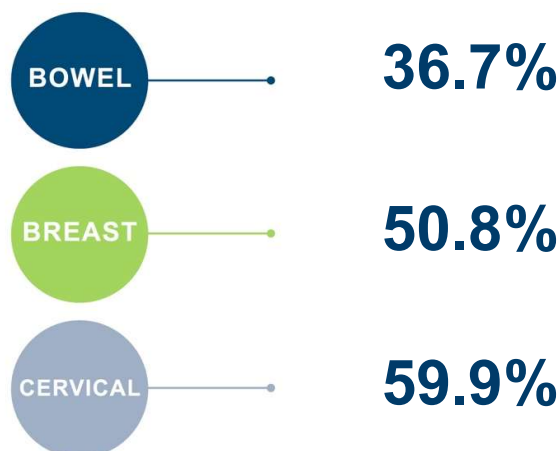
**24.1**

Primary care emergency department presentations per 1,000 people

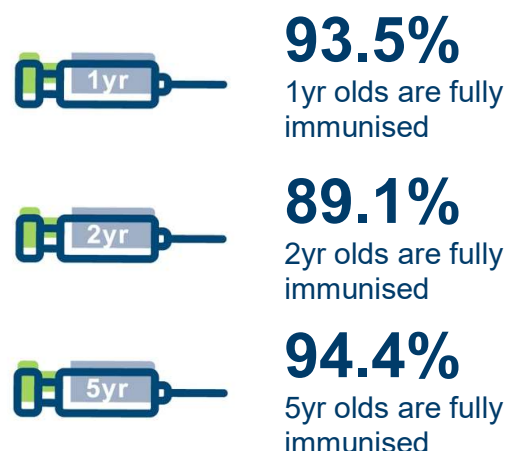
# Gleneilg Shire

## Population Health Snapshot 2018

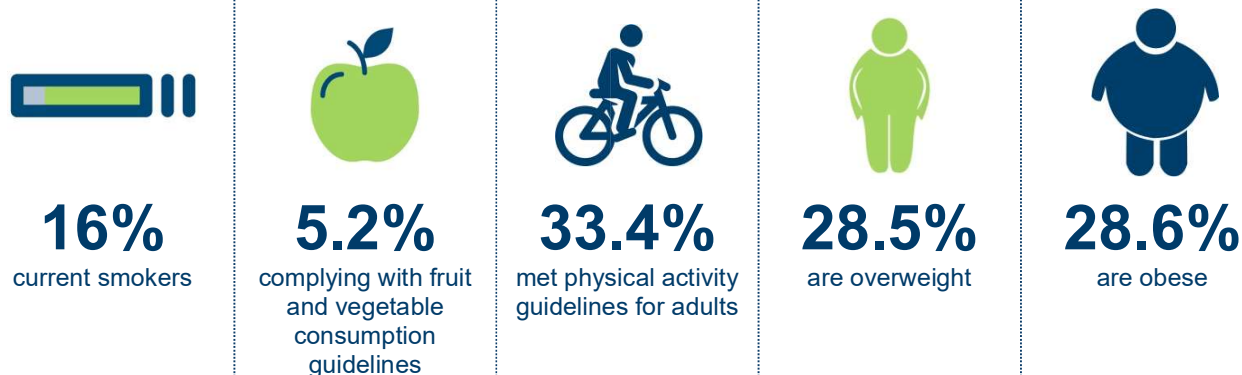
### CANCER SCREENING RATE



### IMMUNISATIONS



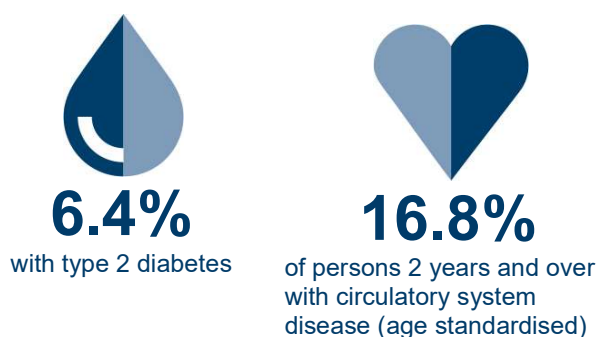
### HEALTH RISK FACTORS (18 years and over)



### MENTAL HEALTH



### CHRONIC DISEASE



### SOURCES

Australian Bureau of Statistics 2017, 2016 Census of Population and Housing, General Community Profile, Australian Bureau of Statistics, retrieved 10 February 2018, <www.censusdata.abs.gov.au> | Australian Institute of Health and Welfare 2018, Mortality Over Regions and Time (MORT) books, Local Government Area (LGA), 2012-2016, Australian Institute of Health and Welfare, Australian Government, retrieved 6 September 2018, <www.aihw.gov.au> | Australian Institute of Health and Welfare 2018, National Health Workforce Data Set 2013-16, Australian Institute of Health and Welfare, Australian Government, retrieved 18 November 2018, <http://hwd.health.gov.au> | Australian Institute of Health and Welfare, Participation in the National Bowel Cancer Screening Program, persons 2014/15, Department of Health, Australian Government, retrieved from PHIDU 2018, Social Health Atlas of Australia, Victoria, Data by Local Government Area, PHIDU, Torrens University Australia, retrieved 14 March 2018, <www.phidu.torrens.edu.au> | Department of Health and Human Services 2017a, 2015 Local Government Area (LGA) Statistical Profiles, Department of Health and Human Services, State Government of Victoria, retrieved 17 May 2018, <www2.health.vic.gov.au> | Department of Health and Human Services 2017b, Victorian Population Health Survey 2014, Department of Health and Human Services, State Government of Victoria, retrieved 14 February 2018, <www2.health.vic.gov.au> | Department of Health and Human Services 2018, Private hospital and day procedure centres, Department of Health and Human Services, State Government of Victoria, retrieved 23 February 2018, <www2.health.vic.gov.au> | Department of Health and Human Services c.2018a, Community Health Directory, Department of Health, State Government of Victoria, retrieved 28 February 2018, <www2.health.vic.gov.au> | Department of Health and Human Services c.2018b, Rural regions and locations, Department of Health and Human Services, State Government of Victoria, retrieved 23 February 2018, <www2.health.vic.gov.au> | Department of Jobs and Small Business 2018, LGA Data tables — Small Area Labour Markets — December quarter 2017, Department of Jobs and Small Business, Australian Government, retrieved 11 April 2018, <docs.jobs.gov.au> | Department of Veterans' Affairs c. 2018, Rural public hospitals-Victoria, Department of Veterans' Affairs, Australian Government, retrieved 23 February 2018, <www.dva.gov.au> | Health Direct Australia 2018, National Health Services Directory, Department of Health, Australian Government, retrieved 02 March 2018 <about.healthdirect.gov.au> | National Diabetes Services Scheme 2018, Diabetes Map (derived from National Diabetes Services Scheme Registrant database and the Australian Bureau of Statistics population projections 2012-2101), Diabetes Australia, Australian Government, retrieved 6 September 2018, <www.ndss.com.au> | PHIDU 2018, Social Health Atlas of Australia, Victoria, Data by Local Government Area, PHIDU, Torrens University Australia, retrieved 14 March 2018, <www.phidu.torrens.edu.au> | Victorian Aboriginal Community Controlled Health Organisation Inc 2018, Our Members, Victorian Aboriginal Community Controlled Health Organisation Inc, retrieved 28 February 2018, <www.vaccho.org.au> | Victorian Health Information Surveillance System 2017, All Individual Ambulatory Care Sensitive Conditions, Department of Health and Human Services, retrieved 11 January 2018, <hns.dhs.vic.gov.au>