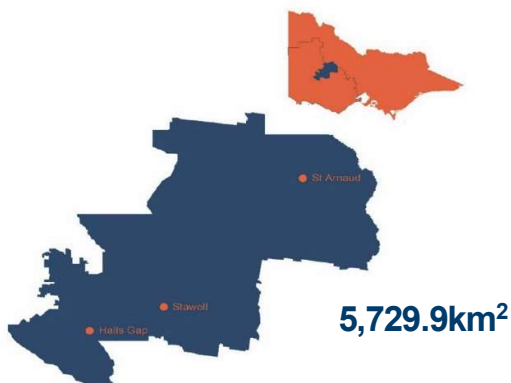


Northern Grampians Shire

Population Health Snapshot 2018



phn
WESTERN VICTORIA
An Australian Government Initiative

DEMOGRAPHICS



11,439
people living in this area



0–14 years

15.0%

1,715

15–64 years

60.2%

6,887

65 years +

24.9%

2,843

Persons identify as Aboriginal and/or Torres Strait Islander

1.5%

168

FACTORS WHICH IMPACT ON HEALTH



92.9%

dwellings with at least one motor vehicle



74.2%

dwellings with internet connection



5.3%

unemployment rate



31.5%

dwellings have an income less than \$650 per week

ACCESS TO SERVICES



15.3

General Practitioners
Full time equivalent



5

General Practices



2

Public Hospitals*



0

Private Hospitals

Other Services: 1 Aboriginal Community-Controlled Health Organisation (ACCHO)

*Public hospitals are counted as the number of hospital locations with acute beds



HOSPITALISATIONS

33.28

Ambulatory Care Sensitive Conditions age standardised per 1,000 people

16.18

Chronic Ambulatory Care Sensitive Conditions age standardised per 1,000 people

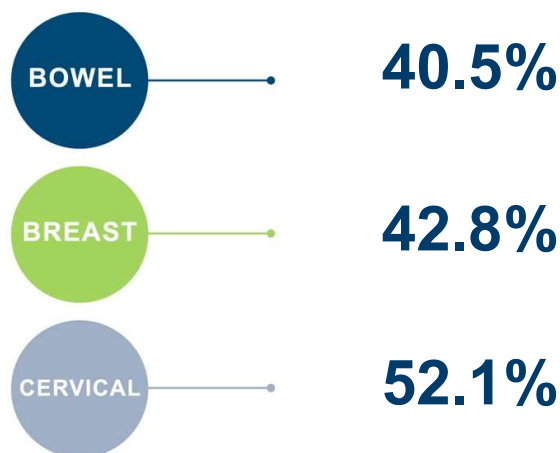
27.3

Primary care emergency department presentations per 1,000 people

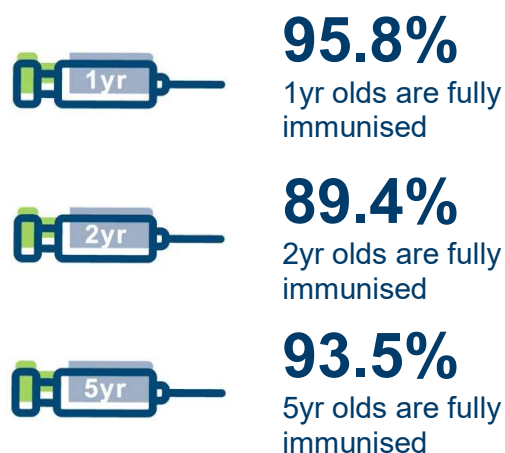
Northern Grampians Shire

Population Health Snapshot 2018

CANCER SCREENING RATE



IMMUNISATIONS



HEALTH RISK FACTORS (18 years and over)



16.6%
current smokers



4.7%
complying with fruit and vegetable consumption guidelines



35.6%
met physical activity guidelines for adults



28%
are overweight



17.4%
are obese

MENTAL HEALTH



19%

persons 18 years and over with high or very high psychological distress (age standardised)



33.1%

persons 18 years and over with a lifetime prevalence of anxiety and depression (age standardised)



16.9

deaths from suicide and self-inflicted injuries per 100,000 persons

CHRONIC DISEASE



6.3%

with type 2 diabetes



17.7%

of persons 2 years and over with circulatory system disease (age standardised)

SOURCES

Australian Bureau of Statistics 2017, 2016 Census of Population and Housing, General Community Profile, Australian Bureau of Statistics, retrieved 10 February 2018, <www.censusdata.abs.gov.au> | Australian Institute of Health and Welfare 2018, Mortality Over Regions and Time (MORT) books, Local Government Area (LGA), 2012-2016, Australian Institute of Health and Welfare, Australian Government, retrieved 6 September 2018, <www.aihw.gov.au> | Australian Institute of Health and Welfare 2018, National Health Workforce Data Set 2013-16, Australian Institute of Health and Welfare, Australian Government, retrieved 18 November 2018, <http://hwd.health.gov.au> | Australian Institute of Health and Welfare, Participation in the National Bowel Cancer Screening Program, persons 2014/15, Department of Health, Australian Government, retrieved from PHIDU 2018, Social Health Atlas of Australia, Victoria, Data by Local Government Area, PHIDU, Torrens University Australia, retrieved 14 March 2018, <www.phidu.torrens.edu.au> | Department of Health and Human Services 2017a, 2015 Local Government Area (LGA) Statistical Profiles, Department of Health and Human Services, State Government of Victoria, retrieved 17 May 2018, <www2.health.vic.gov.au> | Department of Health and Human Services 2017b, Victorian Population Health Survey 2014, Department of Health and Human Services, State Government of Victoria, retrieved 14 February 2018, <www2.health.vic.gov.au> | Department of Health and Human Services 2018, Private hospital and day procedure centres, Department of Health and Human Services, State Government of Victoria, retrieved 23 February 2018, <www2.health.vic.gov.au> | Department of Health and Human Services c.2018a, Community Health Directory, Department of Health, State Government of Victoria, retrieved 28 February 2018, <www2.health.vic.gov.au> | Department of Health and Human Services c.2018b, Rural regions and locations, Department of Health and Human Services, State Government of Victoria, retrieved 23 February 2018, <www2.health.vic.gov.au> | Department of Jobs and Small Business 2018, LGA Data tables — Small Area Labour Markets — December quarter 2017, Department of Jobs and Small Business, Australian Government, retrieved 11 April 2018, <docs.jobs.gov.au> | Department of Veterans' Affairs c. 2018, Rural public hospitals-Victoria, Department of Veterans' Affairs, Australian Government, retrieved 23 February 2018, <www.dva.gov.au> | Health Direct Australia 2018, National Health Services Directory, Department of Health, Australian Government, retrieved 02 March 2018 <about.healthdirect.gov.au> | National Diabetes Services Scheme 2018, Diabetes Map (derived from National Diabetes Services Scheme Registrant database and the Australian Bureau of Statistics population projections 2012-2101), Diabetes Australia, Australian Government, retrieved 6 September 2018, <www.ndss.com.au> | PHIDU 2018, Social Health Atlas of Australia, Victoria, Data by Local Government Area, PHIDU, Torrens University Australia, retrieved 14 March 2018, <www.phidu.torrens.edu.au> | Victorian Aboriginal Community Controlled Health Organisation Inc 2018, Our Members, Victorian Aboriginal Community Controlled Health Organisation Inc, retrieved 28 February 2018, <www.vaccho.org.au> | Victorian Health Information Surveillance System 2017, All Individual Ambulatory Care Sensitive Conditions, Department of Health and Human Services, retrieved 11 January 2018, <hns.dhs.vic.gov.au>