

# Western Victorian Primary Health Network



## Population Health Snapshot 2018



79,843.0 km<sup>2</sup>

### DEMOGRAPHICS



**617,931**  
people living in this area



0–14 years

**18.2%**  
112,629

15–64 years

**62.2%**  
384,424

65 years +

**19.6%**  
120,892

Persons identify as Aboriginal  
and/or Torres Strait Islander

**1.2%**  
7,568

### FACTORS WHICH IMPACT ON HEALTH



**94.3%**

dwellings with at least one  
motor vehicle



**81.2%**

dwellings with internet  
connection



**5.3%**

unemployment rate



**47.5%**

Low income households  
(households in bottom 40%  
of income distribution)

### ACCESS TO SERVICES



**703.1**

General Practitioners  
Full time equivalent



**222**

General Practices



**37**

Public Hospitals\*



**6**

Private Hospitals

**Other Services:** 2 Bush Nursing Hospitals | 25 Community Health Services | 6 Bush Nursing Centres |  
8 Aboriginal Community-Controlled Health Organisations (ACCHOs)

\*Public hospitals are counted as the number of hospital locations with acute beds.



### HOSPITALISATIONS

**2,491**

Ambulatory Care Sensitive Conditions  
age standardised per 1,000 people

**1,165**

Chronic Ambulatory Care Sensitive  
Conditions age standardised per 1,000  
people

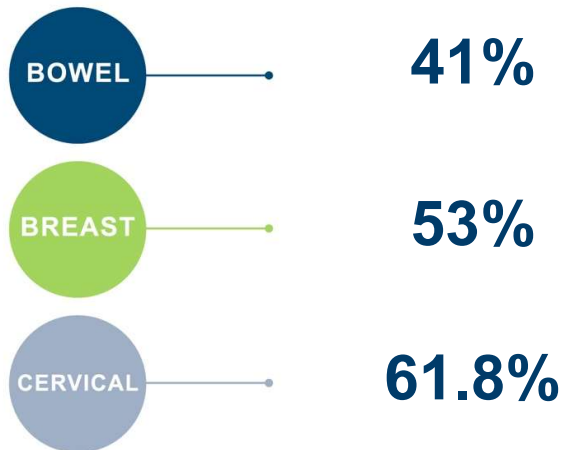
**na**

Primary care emergency department  
presentations per 1,000 people

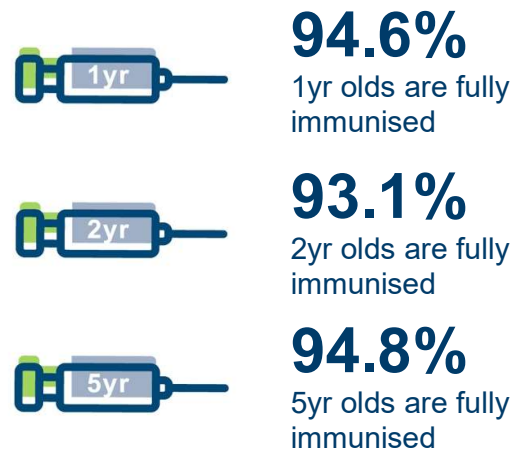
# Western Victorian PHN

Population Health  
Snapshot 2018

## CANCER SCREENING RATE



## IMMUNISATIONS



## HEALTH RISK FACTORS (18 years and over)



**13.5%**  
current smokers



**8.1%**  
complying with fruit and vegetable consumption guidelines



**66.9%**  
met physical activity guidelines for adults



**35.1%**  
are overweight



**34.9%**  
are obese

## MENTAL HEALTH

 **13.1%**

persons 18 years and over with high or very high psychological distress (age standardised)

 **13.8%**

estimated persons with mental and behavioural problems

 **12.5**

deaths from suicide and self-inflicted injuries per 100,000 persons

## CHRONIC DISEASE



**4.8%**  
with type 2 diabetes



**17%**  
of persons 2 years and over with circulatory system disease (age standardised)

## SOURCES

Australian Bureau of Statistics 2015, 2011-12 Australian Health Survey, retrieved 26 February 2018, <www.abs.gov.au> | Australian Bureau of Statistics 2015, Customised report, Australian Health Survey 2011-2012, Australian Bureau of Statistics, Commonwealth of Australia, retrieved 22 May 2018, <www.abs.gov.au> | Australian Institute of Health and Welfare 2017, Cancer Screening in Australia by small geographic area 2015-2016, Australian Institute of Health and Welfare, Australian Government, retrieved 29 January 2018, <www.aihw.gov.au> | Australian Institute of Health and Welfare 2018, Mortality Over Regions and Time (MORT) books, Primary Health Network (PHN), 2012-2016, Australian Institute of Health and Welfare, Australian Government, retrieved 6 September 2018, <www.aihw.gov.au> | Australian Institute of Health and Welfare 2018, National Health Workforce Data Set 2013-16, Australian Institute of Health and Welfare, Australian Government, retrieved 18 November 2018, <http://hwd.health.gov.au/> | Department of Health and Human Services 2018, Private hospital and day procedure centres, Department of Health and Human Services, State Government of Victoria, 19 February, retrieved 23 February 2018, <www2.health.vic.gov.au> | Department of Health and Human Services c.2018a, Community Health Directory, Department of Health, State Government of Victoria, retrieved 28 February 2018, <www2.health.vic.gov.au> | Department of Health and Human Services c.2018b, Rural regions and locations, Department of Health and Human Services, State Government of Victoria, retrieved 23 February 2018, <www2.health.vic.gov.au> | Department of Health c.2016, Western Victoria PHN Profile, Snapshot, Department of Health, Australian Government, retrieved 14 March 2018, <www.health.gov.au> | Department of Veterans' Affairs c. 2018, Rural public hospitals-Victoria, Department of Veterans' Affairs, Australian Government, retrieved 23 February 2018, <www.dva.gov.au> | Health Direct Australia 2018, National Health Services Directory, Department of Health, Australian Government, retrieved 28 February, <about.healthdirect.gov.au> | My Healthy Communities 2017a, Health risk factors in 2014-15, Australian Institute of Health and Welfare, Australian Government, retrieved 26 February, <www.myhealthycommunities.gov.au> | My Healthy Communities 2017b, Healthy Communities: Immunisation rates for children in 2015-16, Australian Institute of Health and Welfare, Australian Government, retrieved 26 February 2018, <www.myhealthycommunities.gov.au> | My Healthy Communities 2017c, Percentage of adults who went to any hospital emergency department for their own health in the preceding 12 months 2015-16, Australian Institute of Health and Welfare, Australian Government, retrieved 26 February 2018, <www.myhealthycommunities.gov.au> | My Healthy Communities 2017d, Potentially Preventable Hospitalisations, Australian Institute of Health and Welfare, Australian Government, retrieved 26 February 2018, <www.myhealthycommunities.gov.au> | National Diabetes Services Scheme 2018, Diabetes Map (derived from National Diabetes Services Scheme Registrant database and the Australian Bureau of Statistics population projections 2012-2101), Diabetes Australia, Australian Government, retrieved 6 September 2018, <www.ndss.com.au> | PHIDU 2018, Social Health Atlas of Australia, Victoria, Data by Primary Health Network, PHIDU, Torrens University, retrieved 13 March 2018, <www.phidu.torrens.edu.au> | Victorian Aboriginal Community Controlled Health Organisation Inc 2018, Our Members, Victorian Aboriginal Community Controlled Health Organisation Inc, retrieved 28 February 2018, <www.vaccho.org.au>