

SEPSIS

THE LIFE-THREATENING
RESPONSE TO INFECTION

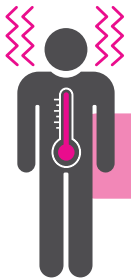
KNOW THE SIGNS!



RAPID BREATHING OR HEART RATE



CONFUSION, SLURRED SPEECH
OR DISORIENTATION



FEVER OR SHIVERING



WEAKNESS OR MUSCLE PAIN



NOT PASSING URINE



NEW RASH OR DISCOLOURED SKIN



FEELING LIKE YOU'RE GOING TO DIE

DON'T DELAY – SEEK URGENT MEDICAL CARE!

SEPSIS

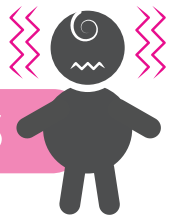
THE LIFE-THREATENING
RESPONSE TO INFECTION

KNOW THE SIGNS!

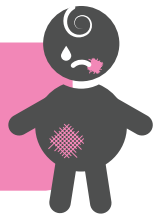


RAPID BREATHING

CONVULSIONS OR FITS

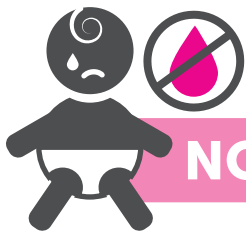
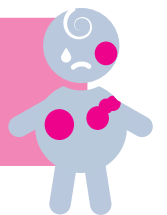


**A RASH THAT DOESN'T FADE
WHEN YOU PRESS IT**



FEVER OR VERY LOW TEMPERATURE

**DISCOLOURED OR MOTTLED SKIN,
VERY PALE OR BLUISH**



NOT PASSING URINE FOR SEVERAL HOURS

HARD TO WAKE, LETHARGIC OR FLOPPY



DON'T DELAY – SEEK URGENT MEDICAL CARE!