



phn
WESTERN VICTORIA

An Australian Government Initiative

Strategic Directions
2020-2023

STRATEGIC DIRECTIONS 2020 - 2023

On behalf of the Western Victoria Primary Health Network (WVPHN) Board I am very pleased to present our Strategic Directions 2020 – 2023.

The upheaval in business-as-usual caused by the COVID-19 pandemic, and the need to rapidly adapt to changing circumstances, has created significant challenges for staff, directors and stakeholders of WVPHN. Throughout this time of great change we have maintained a focus on the values that guide our work.

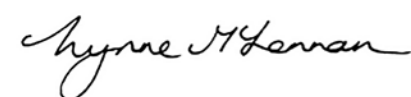
This new iteration of our strategic directions has therefore been developed around WVPHN values of "Lead, Respect, Connect".

The ability to respond rapidly to external change is equally as important as the ability to create change ourselves. Therefore these Strategic Directions will form the framework under which our CEO Rowena Clift will develop an annual organisational business plan that identifies current activities and planned outcomes consistent with the agreed framework.

The communities of western Victoria will continue to face new challenges brought about by economic, social and environmental changes, opportunities that technological advancements bring in terms of health care and communication; coupled with the realities of limited resources to make all the changes we might wish for.

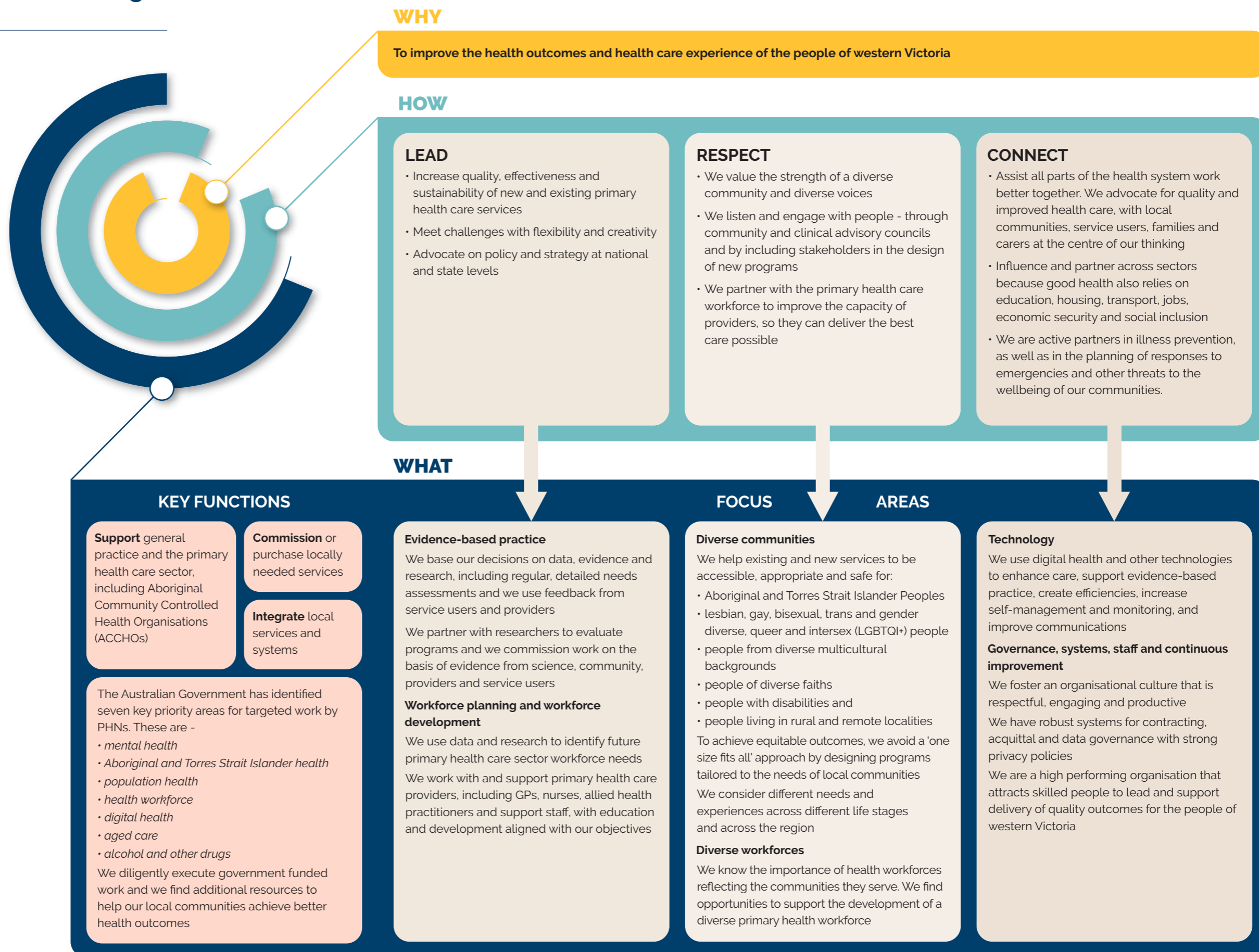
To navigate the road ahead and ensure WVPHN remains a high performing organisation, we will continue to use evidence-based data to inform decision-making and listen to the diversity of voices that make up our rich community.

We will continue to support the primary health care sector, commission locally-needed and collaboratively-designed services, and integrate services and systems, all with the aim of improving the health outcomes and health care experience of the people of western Victoria.



Ms Lynne McLennan
Board Chair
Western Victoria PHN

29 October 2020



Thank you to our Community and Clinical Advisory Councils, community members and staff who provided feedback and advice during the development of these strategic directions .

phn

WESTERN VICTORIA

An Australian Government Initiative

Ballarat

101 Drummond Street North,
Ballarat 3350

Tel: 03 5331 6303

Geelong

131 Myers Street, Geelong 3220

Tel: 03 5222 0800

Horsham

81 Hamilton Street, Horsham 3400

Tel: 03 5381 1756

Warrnambool

Bayside City Plaza, 24-36 Fairy Street,
Warrnambool 3280

Tel: 03 5564 5888

Email: info@westvicphn.com.au

ABN: 87061300918

 facebook.com/westvicphn

 twitter.com/WestVicPHN

Western Victoria Primary Health Network acknowledges the traditional owners and custodians of the lands and waterways - the Wadda Wurrung, Gulidjan, Gadubanud, Keeray Wurrung, Gunditjmara, Djab Wurrung, Wotjobaluk, Dja Dja Wurrung, Jadawadjarli, Wergaia, Jaadwa and Jupagalk peoples. We recognise their diversity, resilience, and the ongoing place that Aboriginal and Torres Strait Islander people hold in our communities. We pay our respects to the Elders, both past and present and commit to working together in the spirit of mutual understanding, respect and reconciliation.

We support self-determination for Aboriginal and Torres Strait Islander Peoples and organisations and we will work with them in partnership on Closing the Gap.